

Lung function and nonalcoholic fatty liver disease: a Mendelian randomization study

Keywords

lung function, nonalcoholic fatty liver disease, Mendelian randomization, forced vital capacity (FVC), Forced expiratory volume in one second (FEV1)

Abstract

Introduction

Associations of pulmonary function as evaluated by forced expiratory volume in one second (FEV1) and forced vital capacity (FVC) with non-alcoholic fatty liver disease (NAFLD) have been reported in observational studies. Nevertheless, observational studies are susceptible to bias and reverse causality, making it difficult to infer the existence and direction of causality. We aimed to evaluate the causal effect of pulmonary function on NAFLD using the Mendelian randomization (MR) method.

Material and methods

We performed univariate MR, multivariate MR, and bidirectional two-sample MR analyses to jointly assess the causal relationship between pulmonary function and NAFLD. In addition to the inverse variance weighting method as the primary MR analysis, three complementary methods were also performed. A series of sensitivity analyses were carried out to rule out pleiotropy.

Results

We found that each genetically predicted (standard deviation) SD increase in FEV1 and FVC was associated with decreased NAFLD risk. However, after adjusting for height in the multivariate MR, only the effect of FEV1 on NAFLD risk remained significant. Furthermore, we found no causal effect of NAFLD on lung function in the reverse MR analysis.

Conclusions

Our findings indicated that reduced lung function, especially FEV1, is causally associated with the risk of NAFLD. Although the mechanism remains unclear, FEV1 could be considered when assessing NAFLD risk and as a potential target for NAFLD prevention.

Title page

Title: Lung function and nonalcoholic fatty liver disease: a Mendelian randomization study

Running title: Lung function and NAFLD

Author: Jiran Shen^{1*}, Yue Wang^{2*}, Sijing Zhou^{4*}, Min Tang¹, Min Li³, Rui Han¹, Ran Wang^{1#}

Affiliation: ¹Department of respiratory and critical care medicine, the First Affiliated Hospital of Anhui Medical University, Hefei 230022, China

²Department of infectious disease, Hefei second people's hospital, Hefei 230001, China.

³Department of oncology, the First Affiliated Hospital of Anhui Medical University, Hefei 230022, China

⁴Department of Occupational Disease, Hefei third clinical college of Anhui Medical University, Hefei 230022, China

#Corresponding author:

Ran Wang Ph.D., Department of respiratory and critical care medicine, The first affiliated hospital of Anhui Medical University, Hefei 230022, China. Phone: 86-551-62922913, Fax: 86-551-62922913, E-mail: wangran@ahmu.edu.cn.

* These authors contributed equally to this work.

Declarations of interest: The authors have no conflicts of interest or sources of funding to declare.

Funding: This research was supported by the fund for Natural Science Foundation of

China (No.81970051), Excellent Top Talent Cultivation Project of Anhui Higher Education Institutions (gxgwfx2021014), A sub-project of the Anhui Medical University National first-class undergraduate specialty construction program (clinical medicine), Construction projects of key disciplines in Hefei (Occupational medicine), and the Applied Medical Research Project of Hefei Health Commission (Hwk2021zd008, Hwk2022zd013).

Abstract

Introduction: Associations of pulmonary function as evaluated by forced expiratory volume in one second (FEV1) and forced vital capacity (FVC) with non-alcoholic fatty liver disease (NAFLD) have been reported in observational studies. Nevertheless, observational studies are susceptible to bias and reverse causality, making it difficult to infer the existence and direction of causality. We aimed to evaluate the causal effect of pulmonary function on NAFLD using the Mendelian randomization (MR) method.

Material and methods: We performed univariate MR, multivariate MR, and bidirectional two-sample MR analyses to jointly assess the causal relationship between pulmonary function and NAFLD. In addition to the inverse variance weighting method as the primary MR analysis, three complementary methods were also performed. A series of sensitivity analyses were carried out to rule out pleiotropy.

Results: We found that each genetically predicted (standard deviation) SD increase in FEV1 and FVC was associated with decreased NAFLD risk. However, after adjusting for height in the multivariate MR, only the effect of FEV1 on NAFLD risk remained significant. Furthermore, we found no causal effect of NAFLD on lung function in the reverse MR analysis.

Conclusions: Our findings indicated that reduced lung function, especially FEV1, is causally associated with the risk of NAFLD. Although the mechanism remains unclear, FEV1 could be considered when assessing NAFLD risk and as a potential target for NAFLD prevention.

Keywords: Forced expiratory volume in one second (FEV1); forced vital capacity (FVC); Mendelian randomization; nonalcoholic fatty liver disease; lung function.

Introduction

Nonalcoholic fatty liver disease (NAFLD), which is one of the most common forms of chronic liver disorder, has an estimated prevalence of 20-35% in the general population ¹. It is defined as a diffuse accumulation of triglycerides (TGs) in hepatocytes after excluding other causes of hepatic steatosis (including other causes of liver disorder, excessive alcohol intake, and other conditions that could contribute to hepatic steatosis) ². Almost 20% of patients progress over time to nonalcoholic steatohepatitis (NASH), liver necrosis, cirrhosis, and ultimately hepatocellular carcinoma ^{3, 4}. Indeed, NAFLD is considered as a hepatic manifestation of metabolic syndrome, and substantial evidence suggests that NAFLD has side effects that extend well beyond the liver ⁵. Multiple metabolic abnormalities and extrahepatic complications are associated with NAFLD, such as insulin resistance, cardiac metabolic illness, and chronic kidney disease, through enhanced low-grade systemic inflammatory mechanisms, which also exerts a causal role in the occurrence and development of NAFLD ⁶⁻¹².

Lung function, as evaluated by forced expiratory volume in 1 second (FEV1) and forced vital capacity (FVC), was usually used to forecast morbidity, mortality, and all-cause mortality related to different airway illnesses ¹³⁻¹⁷. Recent evidence has suggested that lung function impairment is linked with increased risk of metabolic syndrome, cardiovascular disorders, diabetes, as well as systemic inflammation ^{18, 19}. Thus, the

damage of lung function may link to an increased risk of NAFLD, which has been reported in several observational studies²⁰⁻²². Clarifying the nature and direction of the association between pulmonary function and NAFLD can help guide primary prevention. However, due to the limitations of study design, traditional epidemiological studies are usually susceptible to residual confounding, selection bias and other factors, resulting in difficulty in distinguishing causal effects from spurious associations²³. Hence, it remains unclear whether the observed relationship between lung function and the risk of NAFLD is causal.

Mendelian randomization (MR) is an emerging and potent epidemiological technique, which employs genetic variants that are robustly associated with underlying modifiable risk factors to ascertain their causal contribution to disorder risk²⁴. Since these variants are randomly assigned from parents to offspring at conception, MR studies are less vulnerable to reverse causality, confounding, and measurement biases²⁵. Given that previous epidemiological studies have not clearly established a causal relationship between lung function and NAFLD, bidirectional two-sample MR approach may help to clarify the complex causal relationship between the two conditions. Herein, we used published results from genome-wide association studies (GWASs) to investigate whether there is a causal association between lung function and NAFLD, and to assess and analyze the causal effects.

Materials and methods

Study design

To evaluate the association of FEV1 (per SD) as well as FVC (per SD) with

NAFLD, we conducted univariate MR, multivariate MR, and bidirectional two-sample MR analyses, using publicly available genetic data derived from the worldwide genetic consortium. No additional informed consent was required. Single nucleotide polymorphisms (SNPs) were served as instrumental variables (IVs) according to three key assumptions. Firstly, the chosen genetic variants proposed as IVs should be strongly correlated with the exposure. Herein, R^2 and F statistic were applied to represent the strength of the association between genetic variants and exposure. The latest and most rigorous methods of calculation were used. $F = R^2(n-k-1)/k(1-R^2)$. In this formula, R^2 is equal to the cumulative explanatory variance of the selected SNPs on exposure, where k refers to the total number of SNPs selected and n is the sample size. An F value greater than 10 indicates that the correlation is robust enough to avoid bias due to weak IVs. Secondly, the genetic variants need to be independent of potential confounding factors. Thirdly, the genetic variants should affect the risk of outcome merely via the exposure, not through other alternative pathways, which would require no horizontal pleiotropy effect between IVs and outcome.

SNP-FEV1 and FVC association estimates

In this study, genetic IVs for FEV1 (SD, GWAS ID: ukb-b-19657) and FVC (SD, GWAS ID: ukb-b-7953) were derived from the summary GWAS results in the UK Biobank (<https://gwas.mrcieu.ac.uk/>), with 421,986 subjects of European ancestry. UK Biobank is one of the most accessible, largest, and in-depth cohort studies in the world, collecting data from over half a million people (aged 40 to 69) at recruitment in the UK between 2006 and 2010. Trained healthcare staff performed pre-bronchiectasis

pulmonary function tests using a Vitalograph Pneumtrac 6800 spirometer (Maids Moreton, UK). Genotyping was performed using Affymetrix UK BiLEVE Axiom array (~50000 participants) and Affymetrix UK Biobank Axiom array (~450000 participants). Statistical summaries were produced using linear mixed models to account for relatability and population stratification, and then adjusted for sex and genotyping array.

SNP-NAFLD association estimates

Summary-level statistical data for NAFLD were sourced from FinnGen consortium. We limited the NAFLD data to samples of European ancestry to refrain from potential bias caused by population stratification. The dataset consists of 894 cases and 217,898 controls. FinnGen project is a public-private partnership, which integrates disorder endpoint genetic data from the Finnish biobanks and the Finnish health registries. NAFLD cases was defined by using the EHR codes International Classification of Diseases (ICD)10: K76.0, and determined by electronic medical records. Detailed documentations can be found at FinnGen website (<https://finngen.gitbook.io/documentation/v/r5/>).

Instrumental SNPs selection

Strict inclusion criteria were developed to screen qualified IVs. We selected the SNPs for exposure with a genome-wide significant association (For lung function: $P < 5E-08$; For NAFLD: $P < 1E-05$), and without linkage disequilibrium (LD) ($r^2 < 0.001$, clumping distance = 10,000kb). We searched for the exposure-related SNPs in the outcome dataset. When some genetic instruments were not provided in the outcome dataset, we chosen proxy SNPs that were in significant correlation with these SNPs ($r^2 >$

0.8). To assure that the impact of SNPs on the studied exposure corresponds to the same allele as the effect on the studied outcome, palindromic SNPs with intermediate allele frequencies were eliminated from the IVs. SNPs which had the minor allele frequency (MAF) less than 0.01 were also not included. Eligible SNPs were finally identified as IVs for exposure to conduct the MR analysis.

Statistical analysis

The inverse-variance weighted (IVW) method was recognized as the main statistical model to explore the potential causal relationship between lung function and NAFLD²⁶. The IVW method is a weighted regression of the effect of SNP exposure on SNP outcome, with a fixed y-intercept of zero²⁷. Given that the presence of horizontal pleiotropy in IVW estimates can affect the results, three complementary methods were adopted to test the robustness of the conclusions, including the MR-Egger regression method, the weighted median method, and the weighted mode method. The MR-Egger regression method relies on the assumption that the polymorphism of the genetic instrument is independent of the instrument strength and can offer an effective estimate of the causal effect²⁸. The weighted median method can permit a high pleiotropy and generate robust estimates under the circumstance of at least 50% of the information contributing to the analysis comes from valid SNPs²⁹. The weighted mode method can produce consistent outcomes, even though most IVs are noneffective³⁰. These three complementary methods provided relatively robust outcomes at the expense of statistical power.

Sensitivity analysis

To guarantee the reliability of our conclusion, six sensitivity analyses were performed to check and adjust the presence of pleiotropy in the causal estimates. Firstly, the Cochran's Q statistic was used to quantify the heterogeneity among the chosen genetic instruments. When heterogeneity was suspected ($P < 0.05$), random-effects model of IVW was performed to calculate the effect size; otherwise, a fixed-effects model was applied. Secondly, previous studies have demonstrated that height is an established cause of pulmonary function and might bias the Mendelian randomization estimates for FEV1 and FVC³¹, so multivariable MR (MVMR) was conducted to additionally adjust for height. Thirdly, the MR-Egger regression was used to test and correct the potential horizontal pleiotropy among the selected IVs by evaluating the intercept. Fourthly, MR pleiotropy residual sum and outlier (MR-PRESSO) test was implemented to identify underlying outliers, and MR-PRESSO global test of heterogeneity was used to detect potential horizontal pleiotropy. Fifthly, the asymmetry of funnel plot was also used as an index to judge horizontal pleiotropy. Finally, the leave-one-out sensitivity analysis was conducted by sequentially deleting each SNP to determine whether MR estimates were driven by certain strong SNPs.

Data analyses in the current study were completed using the "TwoSampleMR" and "MRPRESSO" packages of the R 4.0.3 software (www.r-project.org). Multiple comparisons were corrected by the Bonferroni approach, with a P value of less than 0.025 (0.05/2) indicating convincing evidence of causality.

Results

Instrumental variables selection

For FEV1, 260 SNPs ($P < 5E-08$, $r^2 < 0.001$) were totally identified, explaining up to 2.24% of the FEV1 variance. The F statistic of these instruments ranged from 30 to 271 with the average value of 57, all exceeding the threshold value of 10. For FVC, 320 SNPs (all $P < 5E-08$, $r^2 < 0.001$) were identified, explaining up to 2.76% of the FVC variance. The F statistic of these instruments ranged from 30 to 457 with the average value of 63, indicating low evidence for weak instrument bias. **Supplementary Table S1 and S2** described the detailed information of the lung function instruments used in the current study.

MR analysis and sensitivity analysis

Since heterogeneity was suspected in the analysis of FEV1 and FVC with NAFLD (P for Cochran's $Q = 0.026$ and 0.016 , respectively) (**Table 1**), the IVW approach with multiplicative random effects model was applied. The primary results of IVW analysis uncovered that genetically predicted each SD increase in FEV1 and FVC was in relation to lower risk of NAFLD (FEV1: odds ratio [OR] = 0.434, 95% confidence interval [CI] = 0.251-0.749, $P = 0.003$; FVC: OR = 0.363, 95%CI = 0.224-0.588, $P < 0.001$) (**Table 1, Figure 1**). Similar relations were obtained in the MR-Egger regression (FEV1: OR = 0.145, 95%CI = 0.027-0.782, $P = 0.026$; FVC: OR = 0.260, 95%CI = 0.068-0.995, $P = 0.050$), weighted median (FEV1: OR = 0.408, 95%CI = 0.193-0.866, $P = 0.020$; FVC: OR = 0.448, 95%CI = 0.233-0.863, $P = 0.016$), and weighted mode methods (FEV1: OR = 0.535, 95%CI = 0.090-3.177, $P = 0.492$; FVC: OR = 0.670, 95%CI = 0.107-4.205, $P = 0.669$), at a cost of lower statistical power and broader confidence levels (**Table 1, Figure 1, 2**).

For FEV1, results from sensitivity analysis demonstrated that the causal estimates were unlikely to be biased by the outlier SNPs and pleiotropic effects (P for MR-Egger intercept = 0.180, P for MR-PRESSO global test = 0.060). Funnel plot showed symmetric result, implying that the directional and horizontal pleiotropy did not reach significant levels (**supplementary Figure S1**). The leave-one-out and forest plots yielded consistent results, and did not find noticeable effects of any single SNP that could drive the results (**supplementary Figure S2 and S3**). For FVC, the MR-Egger regression analyses suggested that there was relatively weak evidence of horizontal pleiotropy, and one outlier SNP (rs11967850) was identified by MR-PRESSO approaches (P for MR-Egger intercept = 0.602, P for MR-PRESSO global test = 0.043). After excluding this outlier, FVC still showed a converse causal effect on the risk of NAFLD (OR = 0.376, 95%CI = 0.234-0.604, $P < 0.001$). The funnel plot was visually symmetric (**supplementary Figure S1**). The leave-one-out and forest plots further verified the robustness of the MR results (**supplementary Figure S2 and S3**). Furthermore, in the MVMR analysis adjusted for height, the converse causal associations of FEV1 and FVC with NAFLD were consistent with the main analyses, but estimates for FVC was attenuated (FEV1: OR = 0.648, 95%CI = 0.446-0.941, $P = 0.023$; FVC: OR = 0.774, 95%CI = 0.501-1.195, $P = 0.248$) (**Table 1, Figure 1**).

Further analyses

To deeply elucidate the causal effect of NAFLD on lung function, we further perform a two-sample MR analysis by using NAFLD as exposure and lung function as outcome. 19 significant and independent SNPs ($P < 1E-05$, $r^2 < 0.001$) were identified,

explaining 69.33% of the variance for NAFLD. The F statistics of these SNPs ranged from 20 to 102 with the average F value of 28 for NAFLD, showing the absence of weak IV bias (**Supplementary Table S3**).

According to the results of IVW, there was no evidence that genetic responsibility for NAFLD had a causal effect on FEV1 (OR = 1.000, 95%CI = 0.996-1.004, P = 0.987) and FVC (OR = 1.003, 95%CI = 0.999-1.006, P = 0.118). MR-Egger, weighted median, and weighted mode approaches also obtained similar results (**Table 2, Figure 3, 4**). Cochran's Q test showed that there was no significant heterogeneity across the estimates of incorporated SNPs (P for FEV1 = 0.332; P for FVC = 0.363, **Table 2**). Moreover, no significantly horizontal pleiotropy was detected by MR-Egger regression (P for FEV1 = 0.054; P for FVC = 0.769, **Table 2**). The MR-PRESSO global test observed no outlier SNPs or a horizontal pleiotropic effect of NAFLD on FEV1 and FVC (P for FEV1 = 0.182; P for FVC = 0.511). The funnel plot also displayed a symmetrical distribution (**supplementary Figure S4**). The leave-one-out as well as the forest plots further verified the reliability of the MR results (**supplementary Figure S5 and S6**).

Discussion

To the best of our knowledge, the current MR study is the first to investigate the bidirectional causal relationship between pulmonary function and NAFLD. Our analyses revealed that each genetically predicted SD increase in FEV1 and FVC was associated with a lower risk of NAFLD. Multivariate MR analysis indicated that after adjusting for height, FEV1 and FVC maintained a reverse causal association with

NAFLD, but only FEV1 reached a significant level. FEV1 is considered an indicator of the severity of airway obstruction, while FVC is a measure of overall lung capacity³². They reflect different aspects of pulmonary function, which might account for the differences in their effects on NAFLD. Furthermore, in the reverse MR analysis, there was no causal effect of NAFLD on FEV1 and FVC.

The association between lung function and NAFLD has been explored in several epidemiological studies. Qin et al. found that damaged lung function as measured by FEV1 and FVC was significantly negatively associated with the prevalence of NAFLD in middle-aged and elderly people without chronic lung disorders²⁰. Jung et al. found that NAFLD was independently related to decreased lung function, and the severity of NAFLD was negatively correlated with pulmonary function²¹. Based on the data of a cross-sectional study, Peng et al. found that individuals with higher levels of hepatic steatosis were at higher risk for poor lung function, and damaged pulmonary function may be an extrahepatic complication of NAFLD²². However, these cross-sectional studies failed to elucidate the sequence of the occurrence of impaired lung function and NAFLD, making it unclear whether there was a causal association between them. In a large cohort of middle-aged South Koreans with more than half a million person-years of follow-up, Song et al. reported that the risk of NAFLD increased with the decrease of FEV1 and FVC in a dose-response manner, and they concluded that decreased pulmonary function was a risk factor for NAFLD³³. Our findings were consistent with those of Song et al. that lung function had a reverse causal association with NAFLD risk. Additionally, we also found no causal effect of NAFLD on lung function.

The exact mechanisms by which reduced lung function contributes to the increased risk of NAFLD remains unknown. However, low-grade chronic inflammation may play a critical role as it is strongly linked with both damaged pulmonary function and NAFLD. The lungs and the liver are known to be both highly vascular organs with a dual blood supply³⁴. Environmental exposures, for example, occupational dusts, industrial chemicals, as well as particulate air pollution, are well-known adverse factors for the decline in lung function³⁵. Inhalation of these harmful particulates from environmental pollution may promote airway inflammation and the production of pro-inflammatory cytokines (such as interleukin-6) from alveolar macrophages, and finally leading to airway damage and impaired lung function³⁶. Additionally, these inflammatory cytokines can also enter the circulation and induce low-grade inflammation throughout the body, and then accelerating the occurrence and development of NAFLD³⁷.

The current study has a relatively large sample size, and is known to be the first MR study to investigate the bidirectional causal relationship between lung function and NAFLD. The usage of MR approach freed this study from potential bias and reverse causality. Moreover, the findings of this study suggest that it is necessary to improve lung function in people at high risk of NAFLD. However, several limitations should also be noticed. First, since all subjects included in this study were of European descent, it should be cautious to extrapolate the results to other ethnicities. Second, the variables were binary, so it is difficult to assess possible dose-response relationships. Third, the dataset in this study was derived from large-scale GWAS studies, so individual-level

detailed information was lacking, which made it impossible to perform stratified analysis.

In a word, using genetic data, we provide strong evidence that reduced lung function, especially FEV1, is causally associated with NAFLD. Despite the exact mechanism remains unclear, FEV1 could be considered when assessing NAFLD risk and as a potential target for NAFLD prevention.

References:

1. Chalasani N, Younossi Z, Lavine JE, Diehl AM, Brunt EM, Cusi K et al. The diagnosis and management of non-alcoholic fatty liver disease: practice Guideline by the American Association for the Study of Liver Diseases, American College of Gastroenterology, and the American Gastroenterological Association. *Hepatology* (Baltimore, Md) 2012;55(6):2005-23.
2. Manne V, Handa P, Kowdley KV. Pathophysiology of Nonalcoholic Fatty Liver Disease/Nonalcoholic Steatohepatitis. *Clinics in liver disease* 2018;22(1):23-37.
3. Perumpail BJ, Khan MA, Yoo ER, Cholankeril G, Kim D, Ahmed A. Clinical epidemiology and disease burden of nonalcoholic fatty liver disease. *World journal of gastroenterology* 2017;23(47):8263-76.
4. Alqahtani SA, Chan WK, Yu ML. Hepatic Outcomes of Nonalcoholic Fatty Liver Disease Including Cirrhosis and Hepatocellular Carcinoma. *Clinics in liver disease* 2023;27(2):211-23.
5. Ziolkowska S, Binienda A, Jabłkowski M, Szemraj J, Czarny P. The Interplay between Insulin Resistance, Inflammation, Oxidative Stress, Base Excision Repair and Metabolic Syndrome in Nonalcoholic Fatty Liver Disease. *International journal of molecular sciences* 2021;22(20).
6. Fiorentino TV, Miceli S, Succurro E, Sciacqua A, Andreozzi F, Sesti G. Nonalcoholic fatty liver disease is associated with a decreased myocardial mechano-energetic efficiency. *Journal of internal medicine* 2021;289(2):221-31.
7. Han E, Lee YH, Kim YD, Kim BK, Park JY, Kim DY et al. Nonalcoholic Fatty Liver Disease and Sarcopenia Are Independently Associated With Cardiovascular Risk. *The American journal of gastroenterology* 2020;115(4):584-95.
8. Peng TC, Wu LW, Chen WL, Liaw FY, Chang YW, Kao TW. Nonalcoholic fatty liver disease and sarcopenia in a Western population (NHANES III): The importance of sarcopenia definition. *Clinical nutrition* (Edinburgh, Scotland) 2019;38(1):422-8.
9. Mantovani A, Zaza G, Byrne CD, Lonardo A, Zoppini G, Bonora E et al. Nonalcoholic fatty liver disease increases risk of incident chronic kidney disease: A systematic review and meta-analysis. *Metabolism: clinical and experimental* 2018;79:64-76.
10. Yu Q, Lee YY, Xia ZY, Liong EC, Xiao J, Tipoe GL. S-allylmercaptocysteine improves

nonalcoholic steatohepatitis by enhancing AHR/NRF2-mediated drug metabolising enzymes and reducing NF- κ B/I κ B α and NLRP3/6-mediated inflammation. *European journal of nutrition* 2021;60(2):961-73.

11. Cantero I, Abete I, Bullón-Vela V, Crujeiras AB, Casanueva FF, Zulet MA et al. Fibroblast growth factor 21 levels and liver inflammatory biomarkers in obese subjects after weight loss. *Archives of medical science : AMS* 2022;18(1):36-44.

12. Małujko-Balcerska E, Sipowicz K, Pietras T. Comparing chronic obstructive pulmonary disease and depressive disorder in terms of inflammation-related biomarkers. *Archives of medical science : AMS* 2023;19(3):814-9.

13. Piccioni P, Tassinari R, Carosso A, Carena C, Bugiani M, Bono R. Lung function changes from childhood to adolescence: a seven-year follow-up study. *BMC pulmonary medicine* 2015;15:31.

14. Zappala CJ, Latsi PI, Nicholson AG, Colby TV, Cramer D, Renzoni EA et al. Marginal decline in forced vital capacity is associated with a poor outcome in idiopathic pulmonary fibrosis. *The European respiratory journal* 2010;35(4):830-6.

15. Soler Artigas M, Wain LV, Miller S, Kheirallah AK, Huffman JE, Ntalla I et al. Sixteen new lung function signals identified through 1000 Genomes Project reference panel imputation. *Nature communications* 2015;6:8658.

16. Ortega VE, Kumar R. The Effect of Ancestry and Genetic Variation on Lung Function Predictions: What Is "Normal" Lung Function in Diverse Human Populations? *Current allergy and asthma reports* 2015;15(4):16.

17. Cheng Y, Chen Q, Huang R, Lao C, Fu W. Moxibustion treatment increases the survival rate of lung infection of patients bed-ridden due to osteoporotic fracture of the spine via regulation of the inflammatory responses. *Archives of medical science : AMS* 2023;19(1):258-63.

18. Lee YY, Tsao YC, Yang CK, Chuang CH, Yu W, Chen JC et al. Association between risk factors of metabolic syndrome with lung function. *European journal of clinical nutrition* 2020;74(5):811-7.

19. Nerpin E, Jacinto T, Fonseca JA, Alving K, Janson C, Malinovschi A. Systemic inflammatory markers in relation to lung function in NHANES. 2007-2010. *Respiratory medicine* 2018;142:94-100.

20. Qin L, Zhang W, Yang Z, Niu Y, Li X, Lu S et al. Impaired lung function is associated with non-alcoholic fatty liver disease independently of metabolic syndrome features in middle-aged and elderly Chinese. *BMC endocrine disorders* 2017;17(1):18.

21. Jung DH, Shim JY, Lee HR, Moon BS, Park BJ, Lee YJ. Relationship between non-alcoholic fatty liver disease and pulmonary function. *Internal medicine journal* 2012;42(5):541-6.

22. Peng TC, Kao TW, Wu LW, Chen YJ, Chang YW, Wang CC et al. Association Between Pulmonary Function and Nonalcoholic Fatty Liver Disease in the NHANES III Study. *Medicine* 2015;94(21):e907.

23. Zhang Y, Liu Z, Choudhury T, Cornelis MC, Liu W. Habitual coffee intake and risk for nonalcoholic fatty liver disease: a two-sample Mendelian randomization study. *European journal of nutrition* 2021;60(4):1761-7.

24. Burgess S, Scott RA, Timpson NJ, Davey Smith G, Thompson SG. Using published

data in Mendelian randomization: a blueprint for efficient identification of causal risk factors. *European journal of epidemiology* 2015;30(7):543-52.

25. Lawlor DA, Harbord RM, Sterne JA, Timpson N, Davey Smith G. Mendelian randomization: using genes as instruments for making causal inferences in epidemiology. *Statistics in medicine* 2008;27(8):1133-63.

26. Burgess S, Butterworth A, Thompson SG. Mendelian randomization analysis with multiple genetic variants using summarized data. *Genetic epidemiology* 2013;37(7):658-65.

27. Chen Y, Shen J, Wu Y, Ni M, Deng Y, Sun X et al. Tea consumption and risk of lower respiratory tract infections: a two-sample mendelian randomization study. *European journal of nutrition* 2022;1-9.

28. Bowden J, Davey Smith G, Burgess S. Mendelian randomization with invalid instruments: effect estimation and bias detection through Egger regression. *International journal of epidemiology* 2015;44(2):512-25.

29. Burgess S, Bowden J, Fall T, Ingelsson E, Thompson SG. Sensitivity Analyses for Robust Causal Inference from Mendelian Randomization Analyses with Multiple Genetic Variants. *Epidemiology (Cambridge, Mass)* 2017;28(1):30-42.

30. Hartwig FP, Davey Smith G, Bowden J. Robust inference in summary data Mendelian randomization via the zero modal pleiotropy assumption. *International journal of epidemiology* 2017;46(6):1985-98.

31. Au Yeung SL, Borges MC, Lawlor DA, Schooling CM. Impact of lung function on cardiovascular diseases and cardiovascular risk factors: a two sample bidirectional Mendelian randomisation study. *Thorax* 2022;77(2):164-71.

32. VanDevanter DR, Pasta DJ. Evidence of diminished FEV1 and FVC in 6-year-olds followed in the European Cystic Fibrosis Patient Registry, 2007-2009. *Journal of cystic fibrosis : official journal of the European Cystic Fibrosis Society* 2013;12(6):786-9.

33. Song JU, Jang Y, Lim SY, Ryu S, Song WJ, Byrne CD et al. Decreased lung function is associated with risk of developing non-alcoholic fatty liver disease: A longitudinal cohort study. *PloS one* 2019;14(1):e0208736.

34. Miao L, Yang L, Guo LS, Shi QQ, Zhou TF, Chen Y et al. Metabolic Dysfunction-associated Fatty Liver Disease is Associated with Greater Impairment of Lung Function than Nonalcoholic Fatty Liver Disease. *Journal of clinical and translational hepatology* 2022;10(2):230-7.

35. Miele CH, Grigsby MR, Siddharthan T, Gilman RH, Miranda JJ, Bernabe-Ortiz A et al. Environmental exposures and systemic hypertension are risk factors for decline in lung function. *Thorax* 2018;73(12):1120-7.

36. van Eeden SF, Tan WC, Suwa T, Mukae H, Terashima T, Fujii T et al. Cytokines involved in the systemic inflammatory response induced by exposure to particulate matter air pollutants (PM(10)). *American journal of respiratory and critical care medicine* 2001;164(5):826-30.

37. Luci C, Bourinet M, Leclère PS, Anty R, Gual P. Chronic Inflammation in Non-Alcoholic Steatohepatitis: Molecular Mechanisms and Therapeutic Strategies. *Frontiers in endocrinology* 2020;11:597648.

Figure legends

Figure 1. Mendelian randomization estimates of lung function with the risk of nonalcoholic fatty liver disease.

Figure 2. Scatterplot of the effect size for each SNP on lung function and the risk of nonalcoholic fatty liver disease.

Figure 3. Mendelian randomization estimates of nonalcoholic fatty liver disease on lung function.

Figure 4. Scatterplot of the effect size for each SNP on nonalcoholic fatty liver disease and lung function.

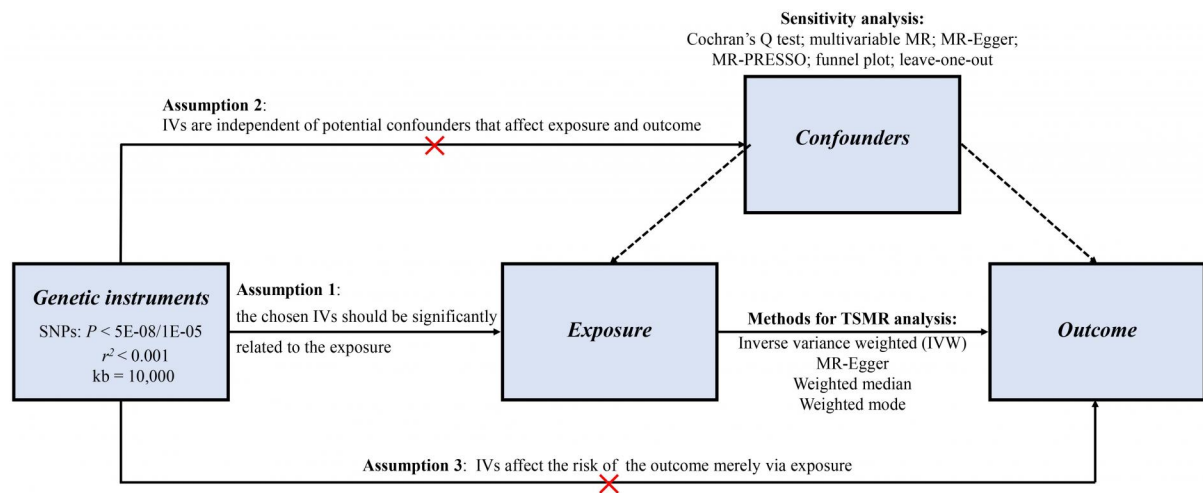


Table 1. MR estimates from each method of assessing the causal effects of lung function on NAFLD risk.

Exposure	Outcome	Nsnp	Methods	Beta	SE	OR (95%CI)	P value	Horizontal pleiotropy			Heterogeneity	
								Egger intercept	SE	P value	Cochran's Q	P value
FEV1	NAFLD	218	IVW	-0.835	0.279	0.434 (0.251-0.749)	0.003	0.018	0.013	0.180	259.383	0.026
			MR Egger	-1.928	0.858	0.145 (0.027-0.782)	0.026					
			Weighted median	-0.895	0.383	0.408 (0.193-0.866)	0.020					
			Weighted mode	-0.626	0.909	0.535 (0.090-3.177)	0.492					
			MVMR	-0.434	0.191	0.648 (0.446-0.941)	0.023					
FVC	NAFLD	277	IVW	-1.013	0.246	0.363 (0.224-0.588)	<0.001	0.005	0.010	0.602	328.679	0.016
			MR egger	-1.346	0.684	0.260 (0.068-0.995)	0.050					
			Weighted median	-0.802	0.334	0.448 (0.233-0.863)	0.016					
			Weighted mode	-0.401	0.937	0.670 (0.107-4.205)	0.669					
			MVMR	-0.256	0.222	0.774 (0.501-1.195)	0.248					

CI, confidence interval; FEV1, forced expiratory volume in one second; FVC, forced vital capacity; IVW, inverse variance weighted; MR, Mendelian randomization; MVMR, multivariable Mendelian randomization; NAFLD, non-alcoholic fatty liver disease; OR, odds ratio; SNP, single nucleotide polymorphism; SE, standard error.

$P < 0.025$ was considered statistically significant.

Preprint

Table 2. MR estimates from each method of assessing the causal effects of NAFLD on lung function.

Exposure	Outcome	Nsnp	Methods	Beta	SE	OR (95%CI)	P value	Horizontal pleiotropy			Heterogeneity	
								Egger intercept	SE	P value	Cochran's Q	P value
NAFLD	FEV1	15	IVW	0.000	0.002	1.000 (0.996-1.004)	0.987	-0.004	0.002	0.054	14.616	0.332
			MR Egger	0.007	0.004	1.007 (1.000-1.015)	0.080					
			Weighted median	0.001	0.003	1.001 (0.996-1.006)	0.578					
			Weighted mode	0.002	0.003	1.002 (0.996-1.008)	0.489					
NAFLD	FVC	14	IVW	0.003	0.002	1.003 (0.999-1.006)	0.118	-0.001	0.002	0.769	13.088	0.363
			MR egger	0.004	0.004	1.004 (0.995-1.012)	0.396					
			Weighted median	0.002	0.002	1.002 (0.997-1.006)	0.485					
			Weighted mode	0.002	0.003	1.002 (0.997-1.008)	0.495					

CI, confidence interval; FEV1, forced expiratory volume in one second; FVC, forced vital capacity; IVW, inverse variance weighted; MR, Mendelian randomization; NAFLD, non-alcoholic fatty liver disease; OR, odds ratio; SNP, single nucleotide polymorphism; SE, standard error. $P < 0.025$ was considered statistically significant.

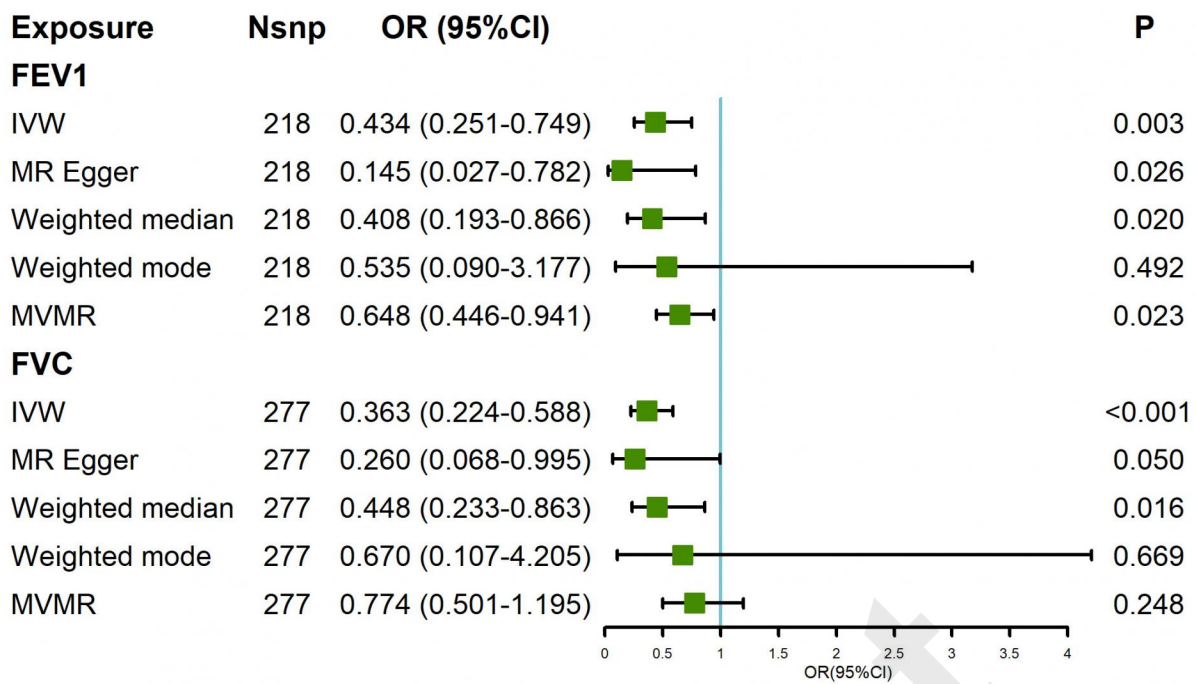


Figure 1. Mendelian randomization estimates of lung function with the risk of nonalcoholic fatty liver disease.

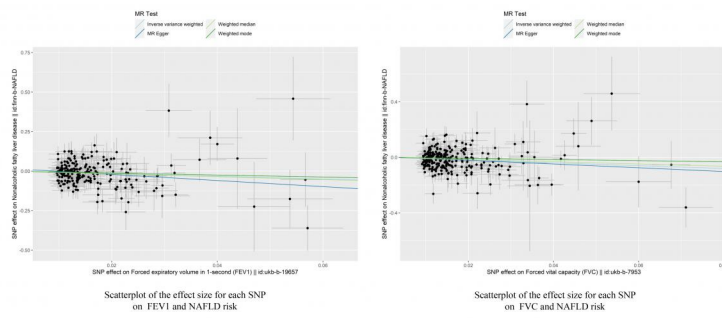


Figure 2. Scatterplot of the effect size for each SNP on lung function and the risk of nonalcoholic fatty liver disease.

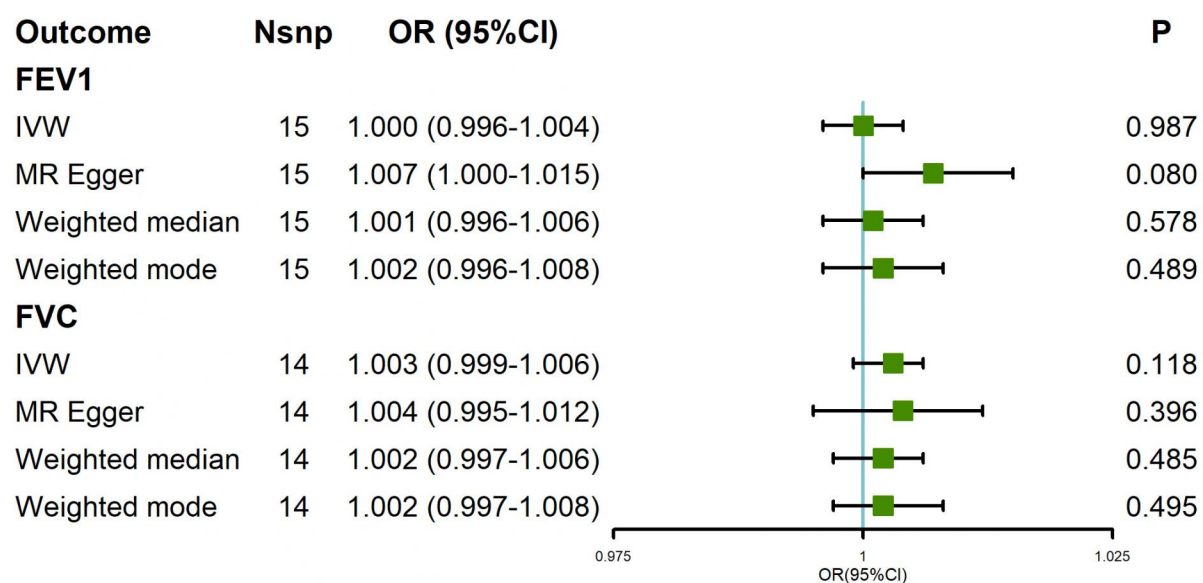


Figure 3. Mendelian randomization estimates of nonalcoholic fatty liver disease on lung function.

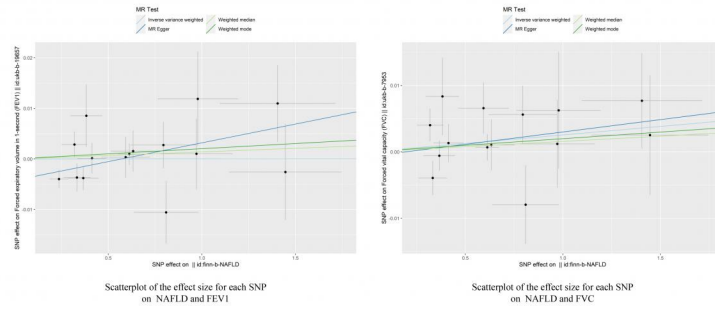


Figure 4. Scatterplot of the effect size for each SNP on nonalcoholic fatty liver disease and lung function.